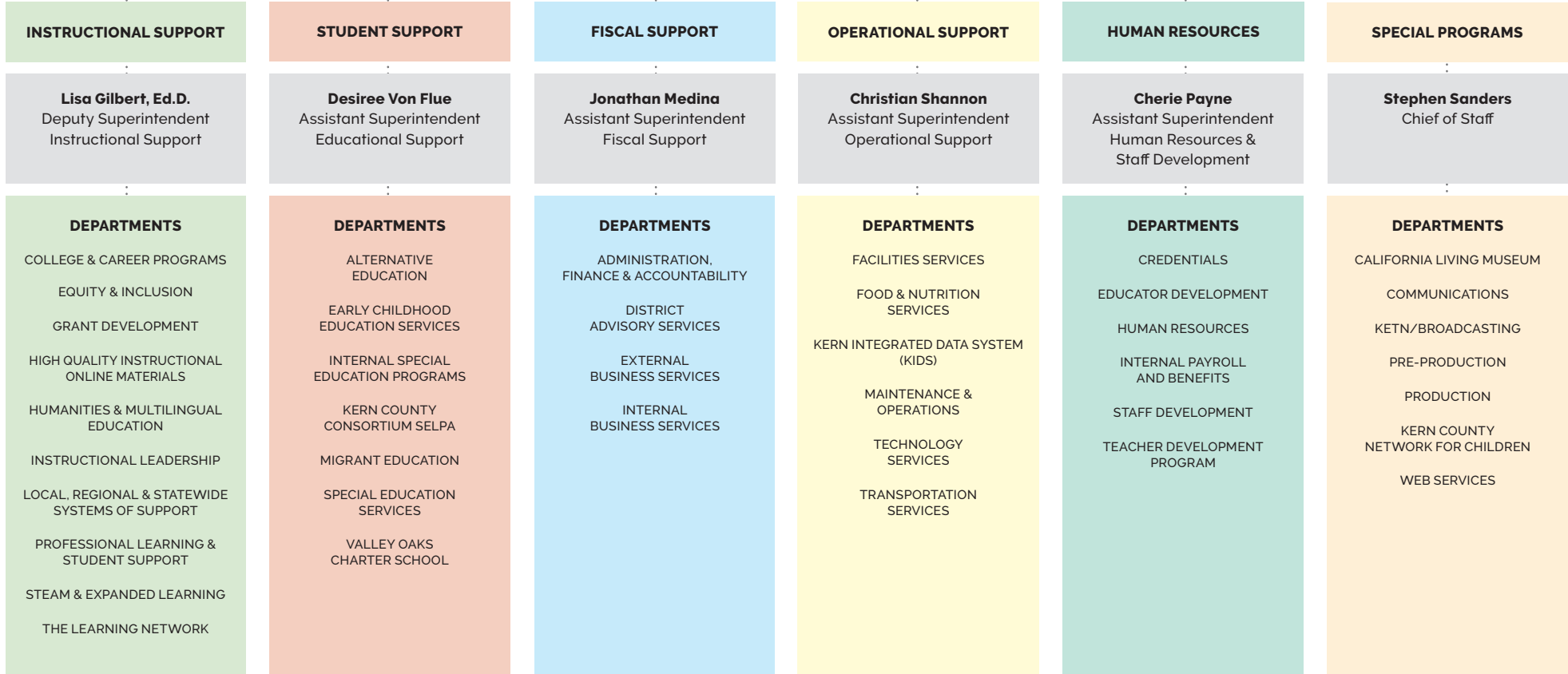


**John G. Mendiburu, Ed.D.**  
 Kern County Superintendent of Schools

- COMMUNITY CONNECTION FOR CHILD CARE
- COMMUNITY SCHOOLS
- HOMELESS & FOSTER YOUTH SERVICES
- KERN EDUCATION PLEDGE
- KERN ENVIRONMENTAL EDUCATION PROGRAM (KEEP)
- SCHOOL COMMUNITY PARTNERSHIPS
- STUDENT WELLNESS



**PARTNERS IN EDUCATION**

- FISCAL CRISIS AND MANAGEMENT ASSISTANCE TEAM (FCMAT)
- GOVERNMENTAL RELATIONS
- SELF-INSURED SCHOOLS OF CALIFORNIA (SISC)
- SCHOOLS LEGAL SERVICE