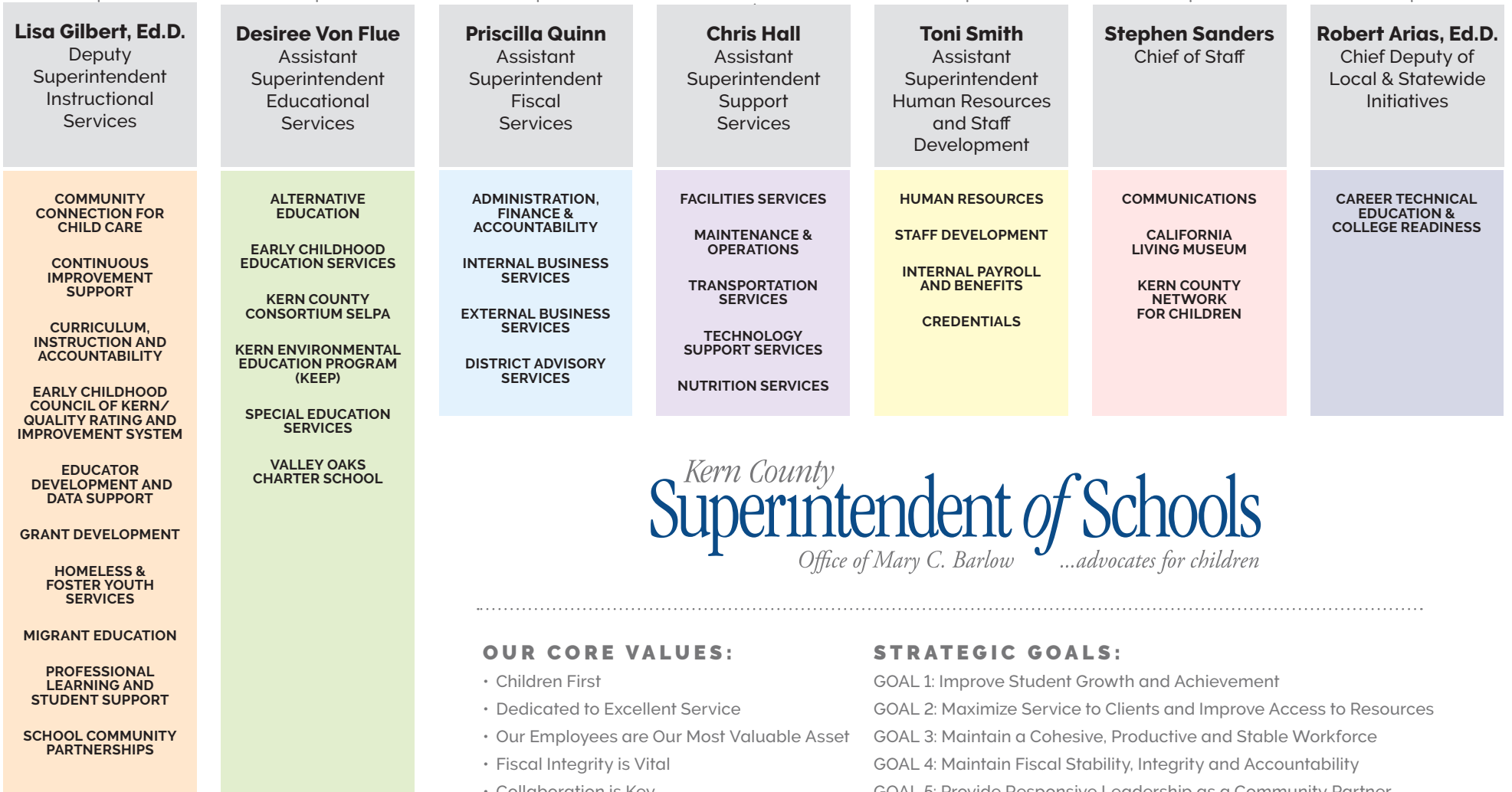


Mary C. Barlow, Ed.D.

Kern County Superintendent of Schools

FISCAL CRISIS AND MANAGEMENT ASSISTANCE TEAM (FCMAT)
 GOVERNMENTAL AFFAIRS
 SELF-INSURED SCHOOLS OF CALIFORNIA (SISC)
 SCHOOLS LEGAL SERVICE



Kern County
Superintendent of Schools
Office of Mary C. Barlow ...advocates for children

OUR CORE VALUES:

- Children First
- Dedicated to Excellent Service
- Our Employees are Our Most Valuable Asset
- Fiscal Integrity is Vital
- Collaboration is Key

STRATEGIC GOALS:

- GOAL 1: Improve Student Growth and Achievement
- GOAL 2: Maximize Service to Clients and Improve Access to Resources
- GOAL 3: Maintain a Cohesive, Productive and Stable Workforce
- GOAL 4: Maintain Fiscal Stability, Integrity and Accountability
- GOAL 5: Provide Responsive Leadership as a Community Partner