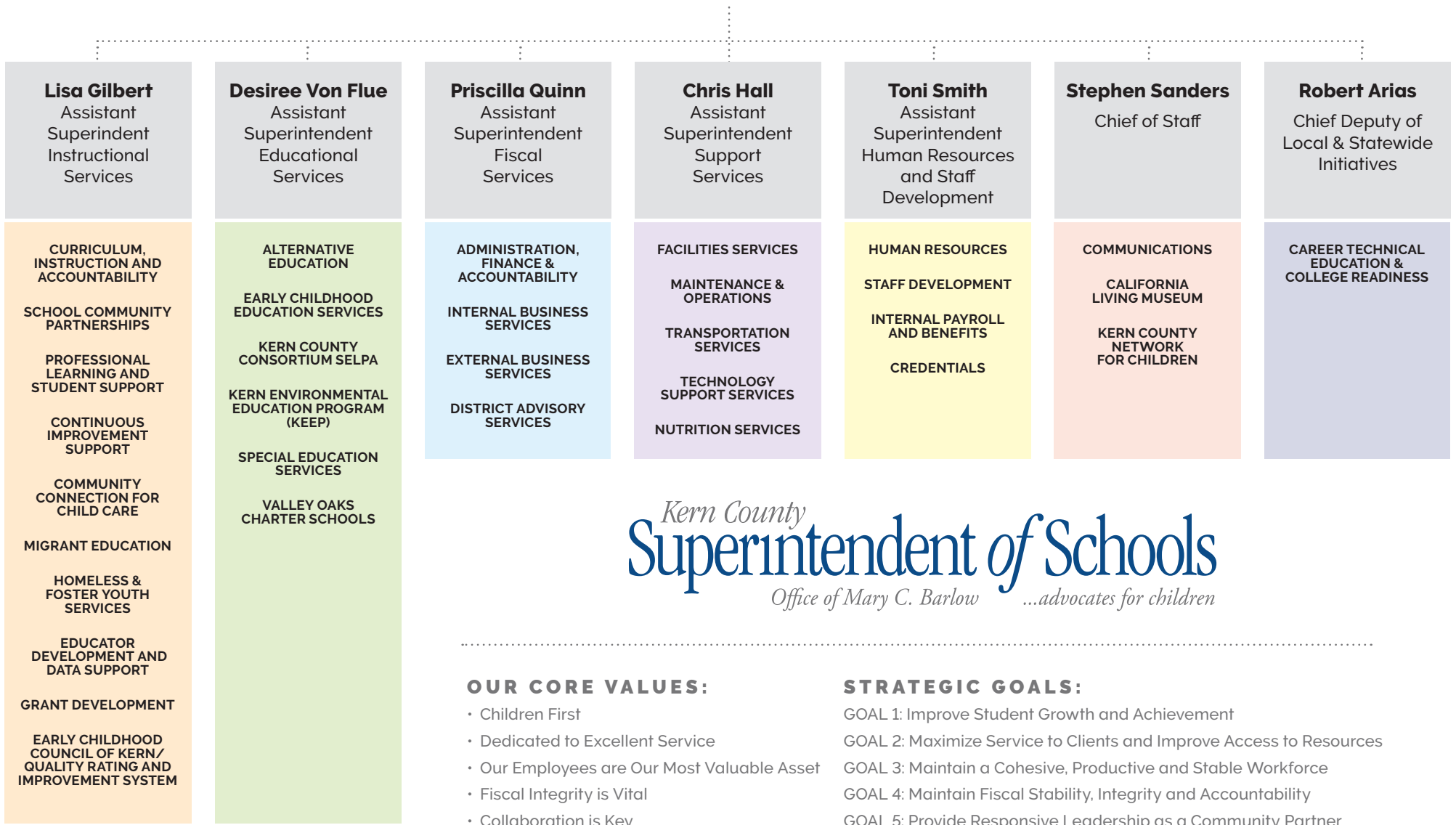


# Mary C. Barlow

## Kern County Superintendent of Schools

FISCAL CRISIS AND MANAGEMENT ASSISTANCE TEAM (FCMAT)  
 GOVERNMENTAL AFFAIRS  
 SELF-INSURED SCHOOLS OF CALIFORNIA (SISC)  
 SCHOOLS LEGAL SERVICE



*Kern County*  
**Superintendent of Schools**  
*Office of Mary C. Barlow ...advocates for children*

**OUR CORE VALUES:**

- Children First
- Dedicated to Excellent Service
- Our Employees are Our Most Valuable Asset
- Fiscal Integrity is Vital
- Collaboration is Key

**STRATEGIC GOALS:**

- GOAL 1: Improve Student Growth and Achievement
- GOAL 2: Maximize Service to Clients and Improve Access to Resources
- GOAL 3: Maintain a Cohesive, Productive and Stable Workforce
- GOAL 4: Maintain Fiscal Stability, Integrity and Accountability
- GOAL 5: Provide Responsive Leadership as a Community Partner