

Student Voice Best Practice: EVALUATION & MONITORING



Kern Co. Student Voice Cohort Mtg: 05/16/23



Welcome Icebreaker

What is your first
thought when you
hear the word
Evaluation?



Program Evaluation

Purposeful, systematic, and careful collection and analysis of information used for the purpose of documenting the effectiveness and impact of programs, establishing accountability, and identifying areas needing change and improvement.



Program Evaluation

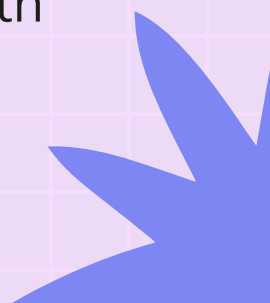
Answers the “So what” question.

What **difference** does your program make for your students.

Determines the **worth** of a project.



Why Is Evaluating Your Student Project So Important?

- Determine the impact of your project and its program outcomes.
 - Identify program strengths, identify unmet needs, and improve weaknesses.
 - Justify use of resources and ensure long-term sustainability of the project.
 - Identify potential problems at an early stage and propose possible solutions
 - Tell a story about your program and celebrate successes with students and partners.
 - Opportunity for students to know their voices were heard.
- 

What is Data?



Data is facts, statistics, and evidence collected for reference and/or analysis.

Data can be a collection of information such as numbers, words, measurements, observations or just descriptions of things.

Data can come from a single source or multiple sources.

Quantitative & Qualitative Data

Quantitative

- Data used to quantify
- Numerical information
- Statistics, surveys
- It can be used as a flashlight for understanding what is going on here



Qualitative

- Data used to describe
- Non-numerical information
- Observations, surveys, interviews, focus groups, LCAPs
- Better suited for *“how and why”* questions





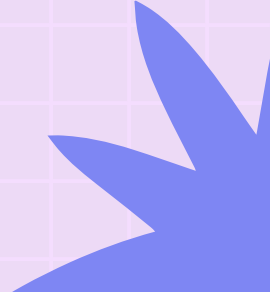
Your Turn!

Which type of data collection do you use most often?

A. Quantitative

B. Qualitative

C. Both



Common Types of Evaluation

Formative Evaluation: ensures that a program or program activity is feasible, appropriate, and acceptable before it is fully implemented. It is usually conducted when a new program or activity is being developed or when an existing one is being adapted or modified.

Process Evaluation: determines whether program activities have been implemented as intended.

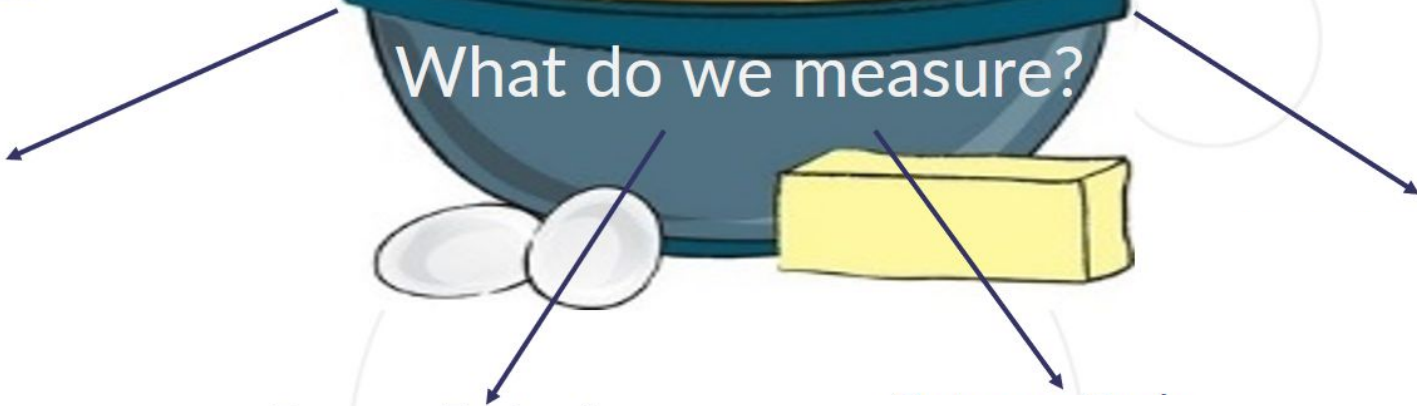
Outcome Evaluation: measures program effects in the target population by assessing the progress in the outcomes or outcome objectives that the program is to achieve.

Impact Evaluation: Assesses program effectiveness in achieving its ultimate goals.

Evaluation Types



What do we measure?



Examples of Data Collection Methods & Tools

Document analysis.

Surveys.

Interviews.

Observations.

Focus groups.

Service logs.

Student database.

CDE Dataquest & Ed Data
databases.

Case studies.

Art projects.

Photo Voice projects.

Storytelling.

Analysis of social media.

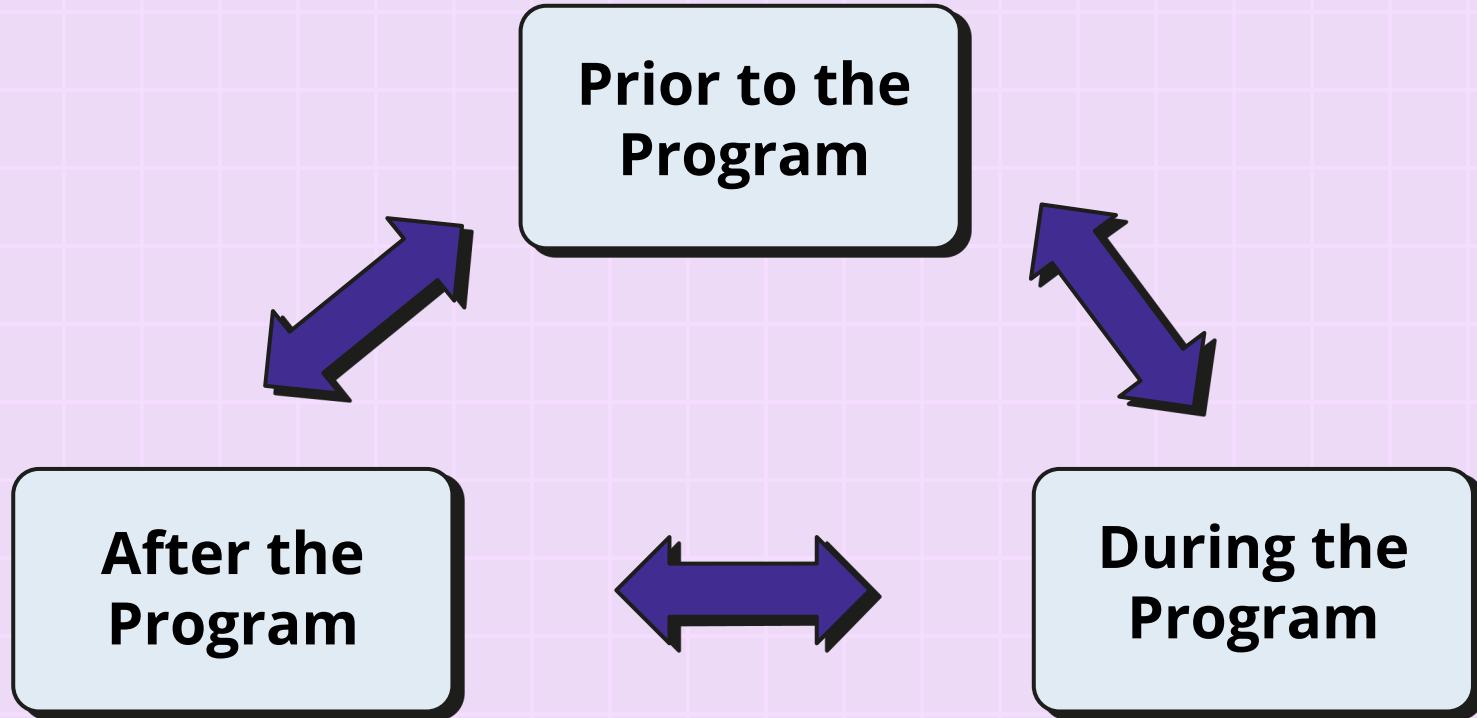
Assessments and tests.

Gallery walks.

Word clouds.

Opinion polls.

When To Collect Evaluation Data



USE STUDENT VOICE PROJECTS FOR PROGRAM EVALUATION!

- By utilizing student voice projects, you can obtain the quantitative & qualitative data necessary for evaluation of other school programs.
- Personal narratives can be used to defend if a strategy is working for your school district or not.
- This data can also be helpful when updating your LCAP.

Kickstarting Your

Student Voice Project

A Toolkit for Schools & Their Student Voice Supporters



Kern County
Superintendent of Schools
Office of Mary C. Barlow ...advocates for children

Planning Your Project

1. Project Background
2. Scope of Project
3. Required Resources
4. Student Involvement
5. Monitoring & Evaluation Plan
6. Project Summary

<https://drive.google.com/file/d/1EULhMFloUGggXpjrPde5txCBrlizY2U/view?usp=sharing>



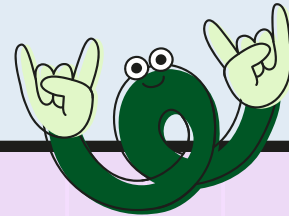
MONITORING & EVALUATION PLAN

How will you document what you are doing and measure your outcomes? How will you monitor the quality? Ongoing evaluation and monitoring of your student voice project are essential because they provide information to the staff implementing the program as well as the youth and school partners. Another important step in student voice is monitoring and co-evaluating your programs and services with youth. They can help you gather information about what's working and what's not and share your findings with others.

Program Outcomes	Performance Criteria	Evaluation Methods
What are your project's goals or outcomes? What changes do you hope the project will make on your youth & school?	How will you know the project's goals have been reached? <i>Examples: XX% of students will report that [survey item] or XX% of students will perform at or above expectations on the [assessment name].</i>	How will these results/outcomes be measured? What will be your measures, how will they be collected & how often?
Data Sources	Youth Involved In Evaluation	
How can these measures or indicators be tracked? Surveys, focus groups, CDE data, SIS data, interviews, etc.?	How will youth contribute to project evaluation (collect data, create survey questions, analyze results, share results with peers & admin).	
Feedback	Monitor Project Quality	
How & where will your results be reported? Who will you share your findings with to ensure your students' viewpoints are heard & acted upon?	How will you monitor the quality of your project? How will you regularly assess results & adjust processes accordingly to improve project?	

MONITORING & EVALUATION PLAN

Use Page 6 of the
 "Kickstarting Your
 Student Voice
 Project" Toolkit!



ASK THESE QUESTIONS

PROGRAM OUTCOMES

What are your project's goals or outcomes?

What changes do you hope the project will make for your youth & school?

How will you know the project's goals have been reached?

Ex: XX% of students will report that ___ or XX% of students will perform at or above expectations on the ____.

PERFORMANCE CRITERIA

AND, ASK THESE QUESTIONS

EVALUATION METHODS

*How will these results be
measured?*

*What will be your measures, how will
they be collected & how often?*

*What data sources will you use?
Ex: Surveys, focus groups, CDE data,
SIS data, interviews, photography,
role play/dramatization,
brainstorming, fishbowl, exercise
storytelling, etc*

DATA SOURCES

DON'T FORGET ABOUT THESE QUESTIONS!

YOUTH INVOLVED IN EVALUATION

How will youth contribute to project evaluation?
Ex: Collect data, create survey questions, analyze results, present results, etc.

How will you monitor the quality of your project?
How will you regularly assess results & adjust processes accordingly, to improve your project?

MONITOR PROJECT QUALITY

ONE LAST QUESTION...

How & where will your results be reported?

Who will you share your findings with? How will you ensure students' feedback is heard & acted on?

FEEDBACK

Close the Student Feedback Loop!!!

- Inform students that their feedback has been collected, considered & acted upon.
- Closing the feedback loop will:
 - Builds trust & transparency between students & school staff.
 - Instil sense of confidence in student body & more willing to provide future feedback.
- Report back as soon as can, especially if time-sensitive or something they're anxious about.

Want To Know More?

Help with evaluation design,
analysis, & presentation.

Kim Silva

kisilva@kern.org

661.636.4948



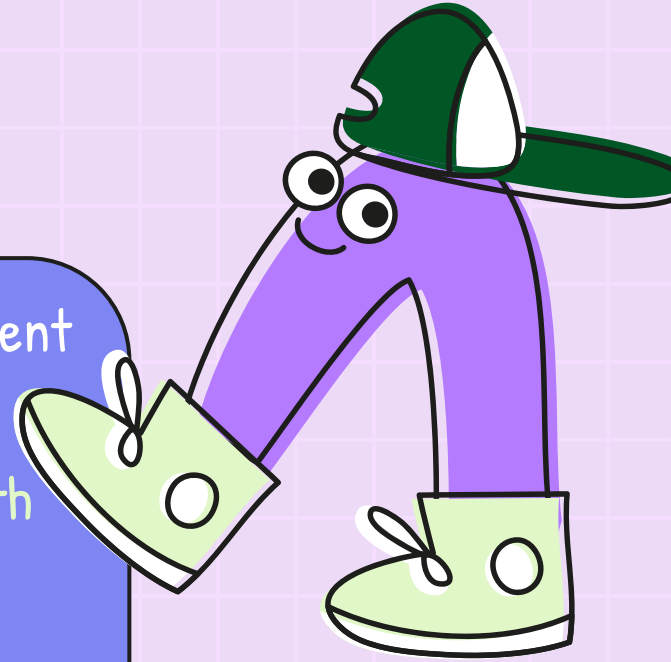
Learn about
data collection & analysis
Linking Data To Practice
Video

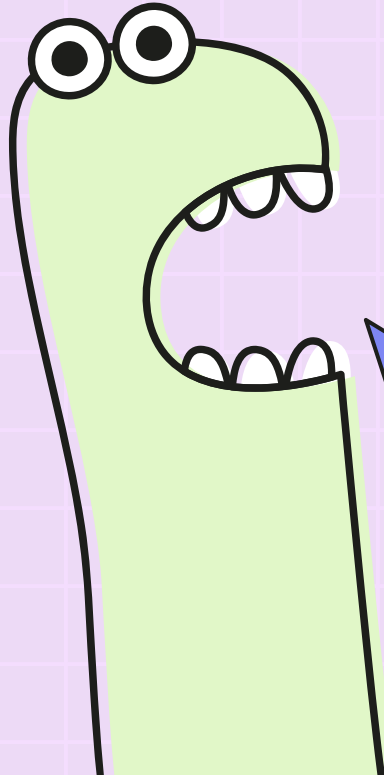
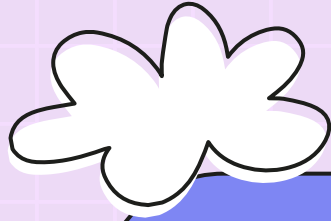
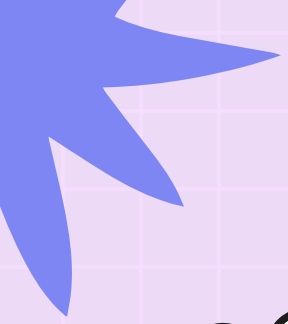
Sophie Gatowski, PhD

Recording Link: <https://youtu.be/F7FdkM7qMas>

STUDENT VOICE REMINDERS

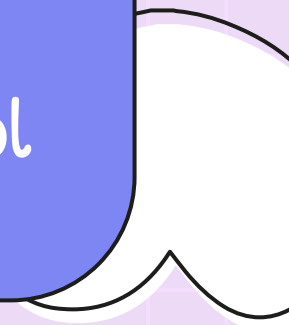
- ★ Mini-grants available to support your student voice efforts!
 - Interested? Email Allyson & Kim with project details.
- ★ Digital cameras available for checkout for video, vlogging & photovoice projects.
- ★ 2024 "Student Voice Matters" Day Planning Committee now forming.





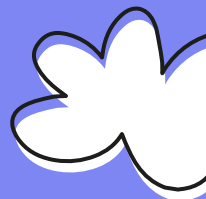
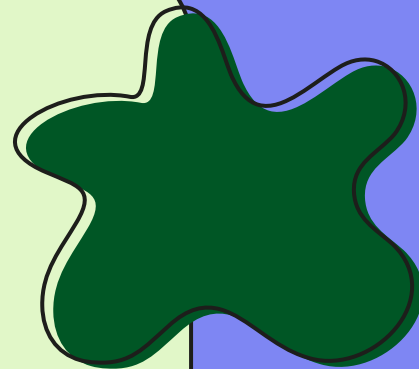
What bright ideas you have received from this presentation?

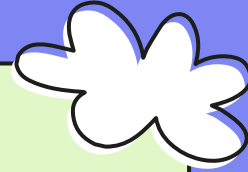
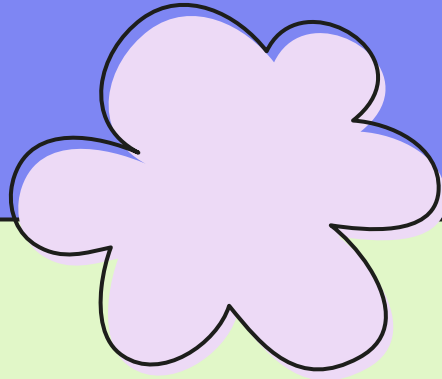
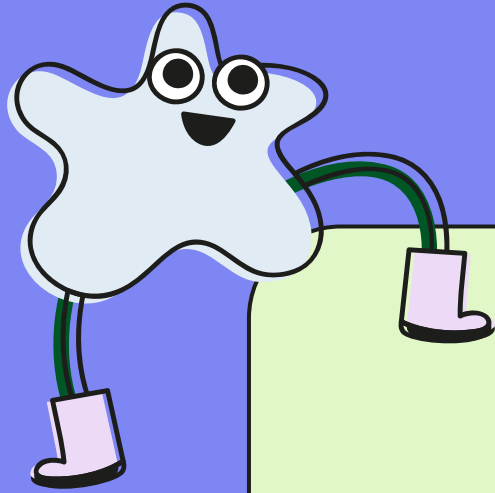
What information sparked ideas about what you can do within your district or school sites?



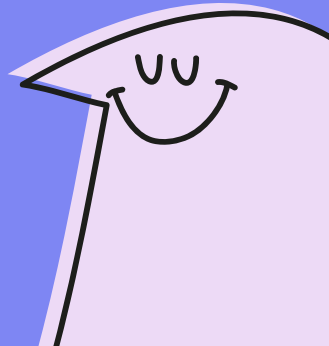


ROUNDTABLE:
LEA Project
Updates





Let's choose our
next meeting
date/time!



TAKE OUR SURVEY



THANK YOU!

QUESTIONS? NEED MORE INFO?

Allyson Baptiste
albaptiste@kern.org

Kim Silva
kisilva@kern.org