

Community Connection for Child Care
Professional Development Calendar

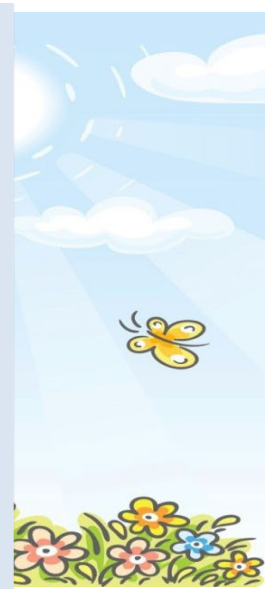
November 2024

Register online at

www.caregistry.org

Virtual Training hosted via Zoom

For training information in English
Call 661-861-5271 or 661-861-5201
Para información de capacitación en
Español llamado 661-861-5208



All dates are contingent upon participation /registrations. Please confirm dates beforehand.
Todas las fechas están sujetas a participación/inscripción. Por favor de confirmar fechas con anterioridad.

| Date/Fecha | Training | Time | Presenter | Location |
|---------------------------------|---|------------------------|---|--|
| November 2024 Noviembre 2024 | Entrenamiento | Hora | Presentado por | Ubicación |
| November 5 th | Developmentally Appropriate Curriculum <i>ESPAÑOL</i> | 6:00 p.m. – 8:00 p.m. | Lillian Pimentel-Stratton <i>Bakersfield College</i> | 2000 K Street Bakersfield CA 93301 |
| November 12 th | Immunization Schedules for Children, Adolescents and Adults - Centers for Disease Control and Prevention Guidelines <i>ESPAÑOL</i> | 6:00 p.m. – 8:00 p.m. | Kern County Department of Public Health | Virtual Zoom Training |
| November 14 th | A Guide to Social Media – Effects on Adolescents & Adults <i>ENGLISH</i> | 6:00 p.m. – 8:00 p.m. | Kern County Behavioral Health Recovery Services | Virtual Zoom Training |
| November 16 th | Breastfeeding 101 <i>ENGLISH</i> | 9:00 a.m. – 11:00 a.m. | Terriva Porter <i>WIC - CAPK</i> | Virtual Zoom Training |
| November 16 th | Breastfeeding 101 <i>ESPAÑOL</i> | 9:00 a.m. – 11:00 a.m. | Terriva Porter <i>WIC - CAPK</i> | 2000 K Street Bakersfield CA 93301 |
| November 19 th | Developmentally Appropriate Curriculum <i>ENGLISH</i> | 6:00 p.m. – 8:00 p.m. | Dr. Bernadette Towns <i>Bakersfield College</i> | Virtual Zoom Training |
| November 21 st | A Guide to Social Media – Effects on Adolescents & Adults <i>ESPAÑOL</i> | 6:00 p.m. – 8:00 p.m. | Kern County Behavioral Health Recovery Services | Virtual Zoom Training |