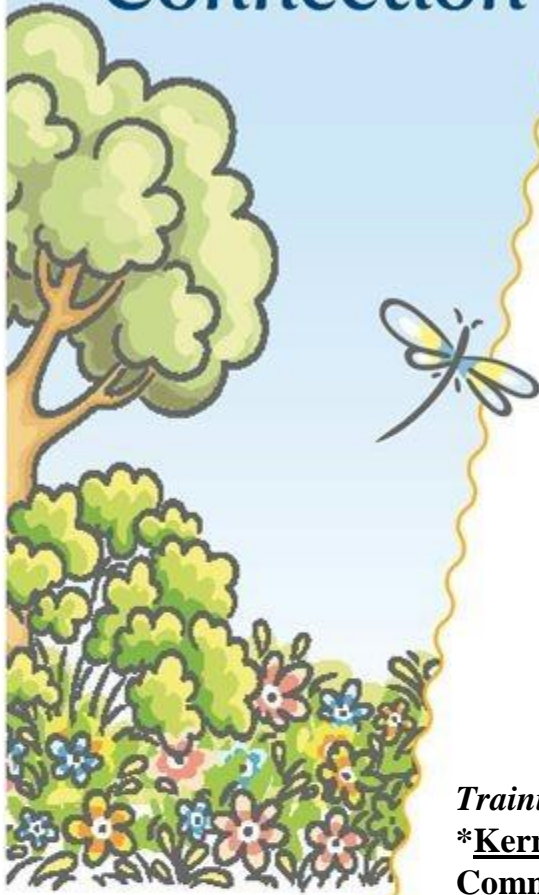


# ...Making the Connection



2000 K Street, Suite 110  
Bakersfield, CA 93301  
661-861-5200  
(Toll Free) 877-861-5200

*A program operated  
by the Kern County  
Superintendent  
of Schools Office  
Mary C. Barlow,  
Superintendent*

## Preventative Health & Safety Practices Training Program

*Community Connection for Child Care, through the California Department of Education Preventative Health and Safety Practices Trainer Program, is offering no cost Preventative Health and Safety Practices Training. These trainings satisfy the 8-hour training requirements set forth by the State of California and Community Care Licensing to become a Licensed In-Home Family Child Care Provider.*

### **Training Locations:**

#### **\*Kern County**

**Community Connection for Child Care**  
2000 K Street  
Bakersfield, CA 93301

#### **Dates:**

**English: August 21 & 22, 2019 and January 8 & 9, 2020**  
**Spanish: October 23 & 24, 2019 and April 22 & 23, 2020**

**\*\*The Bakersfield trainings are 2-day trainings.**

#### **\*San Luis Obispo County:**

**Community Action Partnership for San Luis Obispo County**  
805A Fiero Lane  
San Luis Obispo, CA 93401

**\*\*There is a \$5 fee for trainings in San Luis Obispo.**

#### **Dates:**

**English and Spanish: September 14, 2019, November 2, 2019,  
February 15, 2020 and June 13, 2020**

**To register and view the training calendar for the training dates,  
please visit: [www.caregistry.org](http://www.caregistry.org)**

**\*\*Attendees MUST have an ECE Workforce Registry ID number to attend.\*\***

[www.kernchildcare.org](http://www.kernchildcare.org)