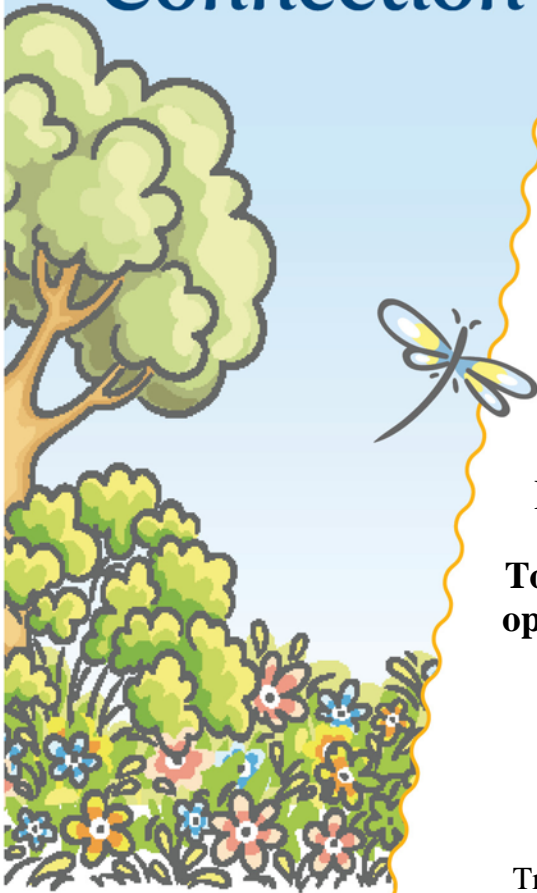


...Making the  
Connection



## Preventative Health & Safety Practices Trainer Program

**Community Connection for Child Care**, through the California Department of Education Preventative Health and Safety Practices Trainer Program, will pay **\$90** towards your Preventative Health and Safety Practices Training.

**To find out how you can take advantage of this great opportunity contact:**

Community Connection for Child Care  
Resource and Referral  
(661) 861-5271 English  
(661) 861-5208 Spanish

Trainings will be provided in Kern and San Luis Obispo Counties

By  
LifeTrack & Associates  
(661) 833-0033



2000 K Street, Suite 110  
Bakersfield, CA 93301  
661-861-5200  
(Toll Free) 877-861-5200

*A program operated  
by the Kern County  
Superintendent  
of Schools Office  
Mary C. Barlow,  
Superintendent*

### Training Locations:

#### **\*Kern County**

**LifeTrack & Associates  
930 Truxtun Ave. Room 208  
Bakersfield, CA 93309**

#### **\*San Luis Obispo County**

**Community Action Partnership for San Luis Obispo County  
805A Fiero Lane  
San Luis Obispo, CA 93401**

**\*\*There is a \$5 fee for trainings in San Luis Obispo.**

**To register and view calendar for the training**, please click on the following link: [www.caregistry.org](http://www.caregistry.org)

**Attendees MUST** have an ECE Workforce Registry ID number to attend.

[www.kernchildcare.org](http://www.kernchildcare.org)