

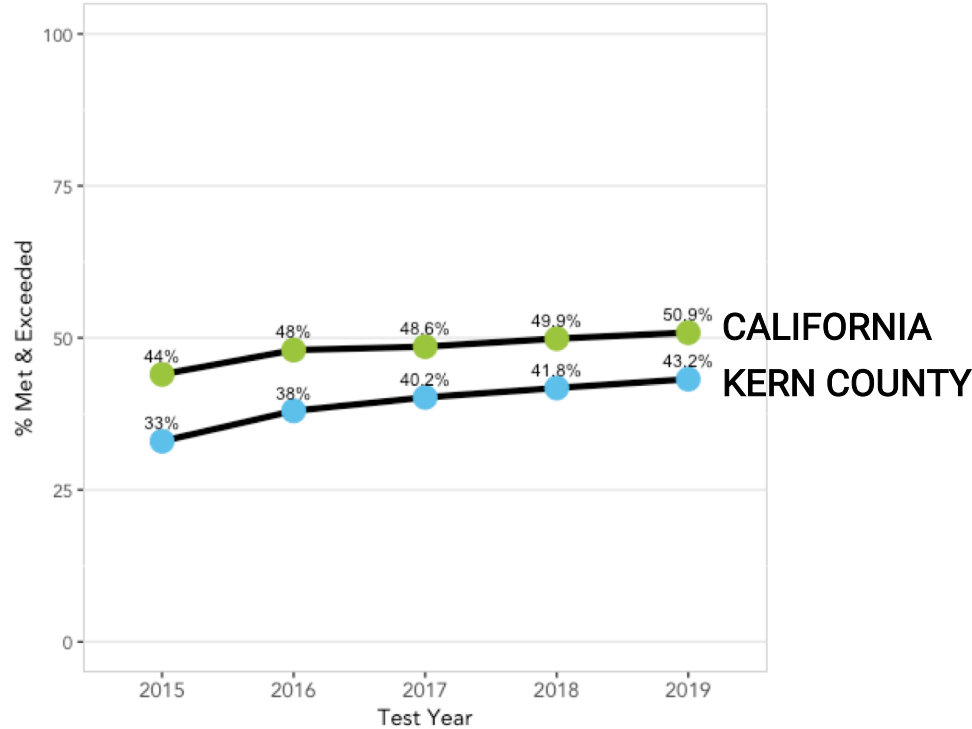
2018-19 CAASPP Results Kern County

Enrollment 2018-19

	KERN COUNTY	CALIFORNIA
Total Enrollment	192,446	6,186,278
Students Tested with Scores	ELA: 99,178 MATH: 99,201	ELA: 3,162,910 MATH: 3,170,971
Socioeconomically Disadvantaged	143,485 (74.6%)	3,766,007 (60.9%)
English Learners	36,069 (18.7%)	1,195,988 (19.3%)
Students with Disabilities	19,340 (10%)	725,412 (11.7%)
Foster Youth	1,165 (0.6%)	33,563 (0.5%)

English Language Arts

● CA ● Kern

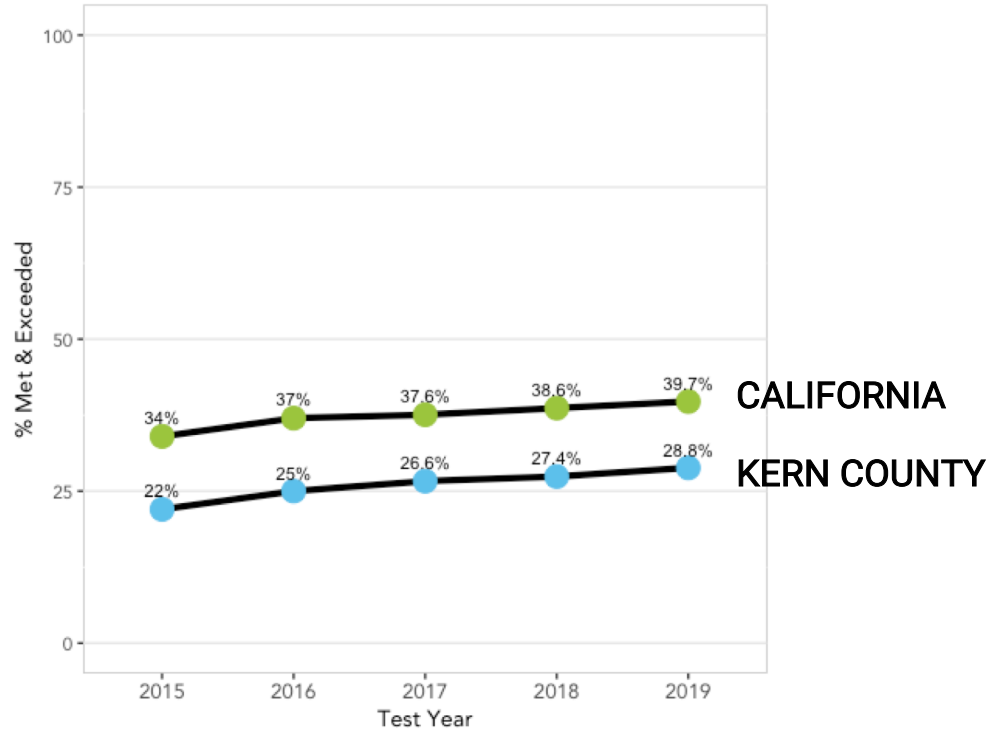


Since 2015

- Kern County's % of students that met and exceeded standard increased by +10.2%
- California's % of students that met and exceeded standard increased by +6.9%

Mathematics

● CA ● Kern

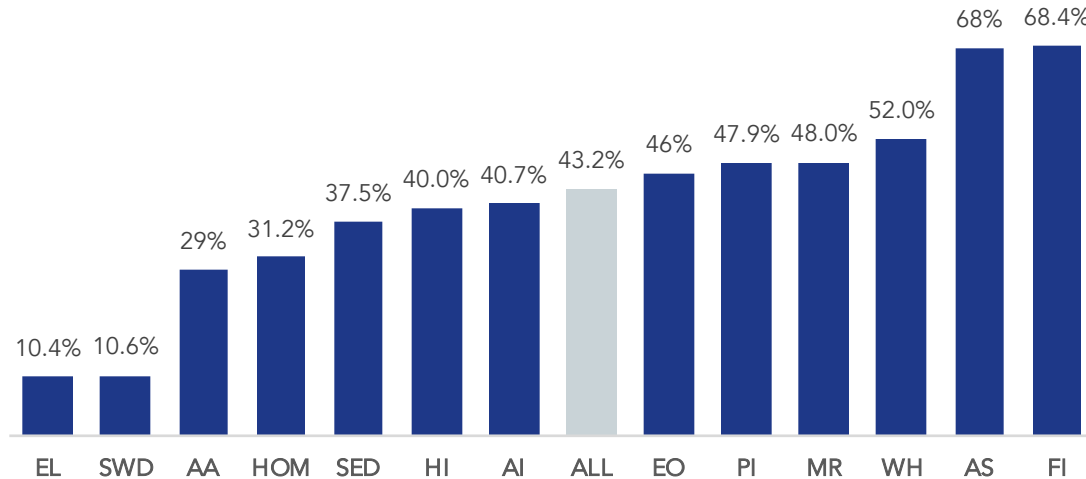


Since 2015

- Kern County's % of students that met and exceeded standard increased by +6.8%
- California's % of students that met and exceeded standard increased by +5.7%

English Language Arts Student Group Performance

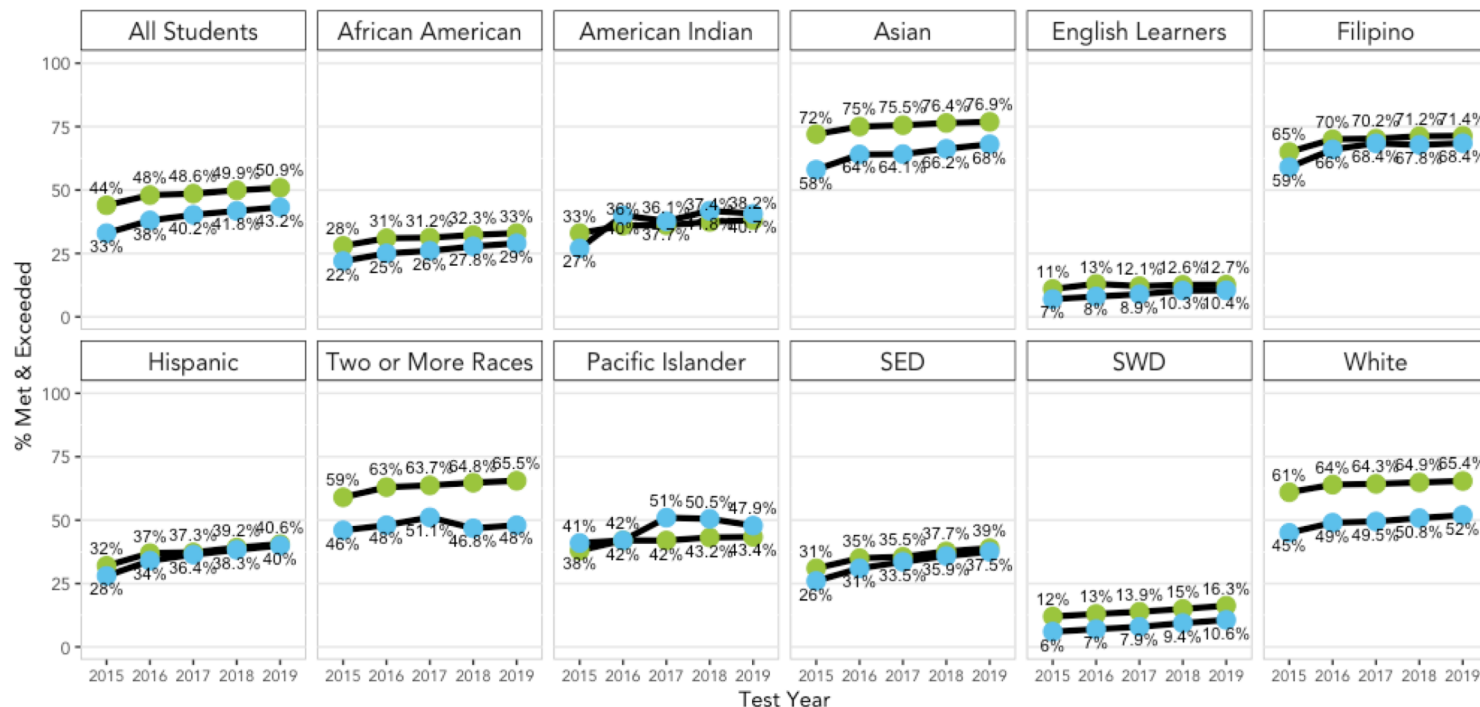
English Language Arts
% Met & Exceeded



Student Group	% Met & Exceeded
ALL – All Students	43.2%
AA – African American	29.0%
AI – American Indian	40.7%
AS - Asian	68.0%
EL – English Learners	10.4%
EO – English Only	46.0%
FI – Filipino	68.4%
HI - Hispanic	40.0%
HOM – Homeless Youth	31.2%
MR – Two or More Races	48.0%
PI – Pacific Islander	47.9%
SED – Socioeconomically Disadvantaged	37.5%
SWD – Students with Disabilities	10.6%
WH - White	52.0%

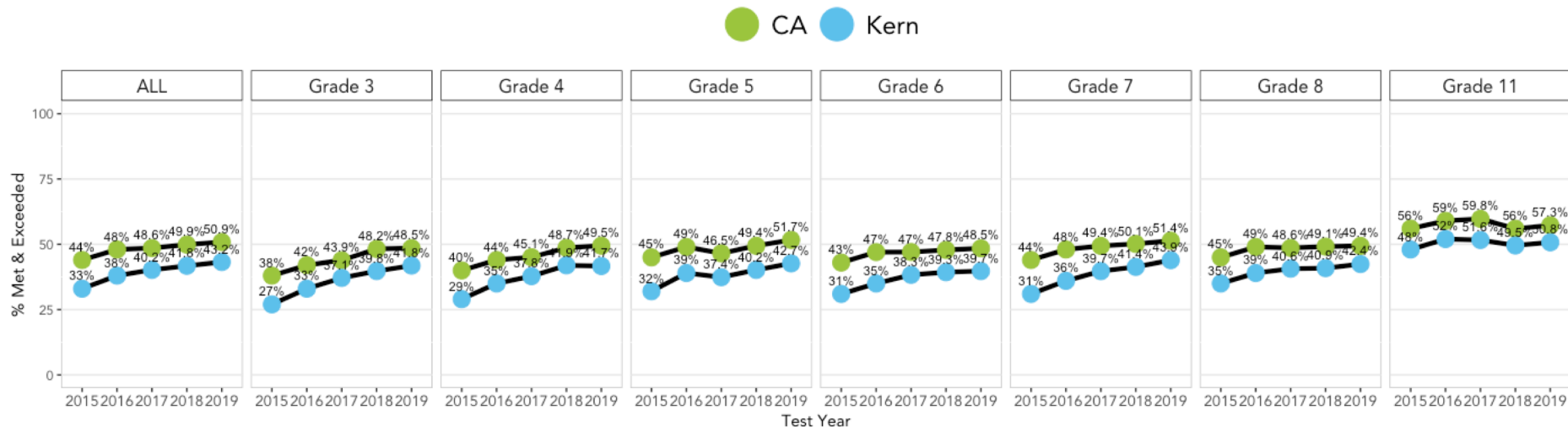
English Language Arts Student Group Performance

CA Kern



Kern County English Language Arts

Grade Level Performance



Kern County 2019

Distance from Standard by Grade

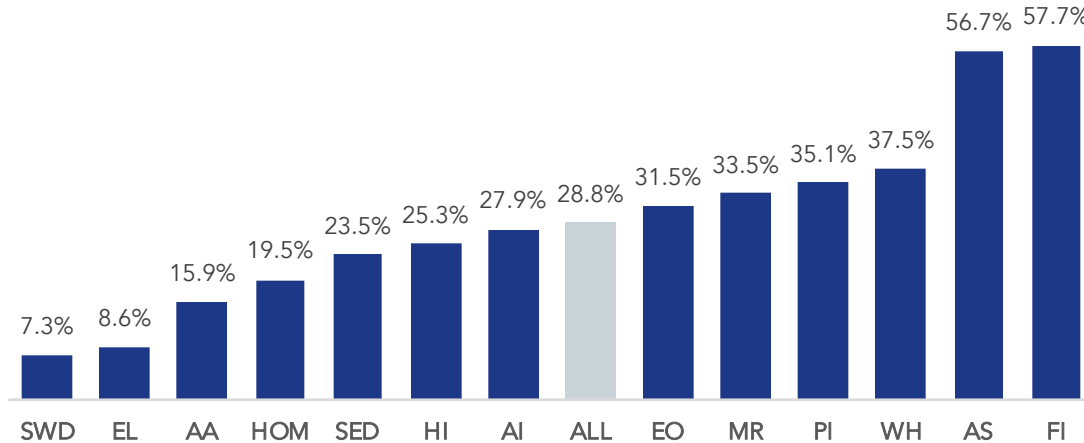
ENGLISH LANGUAGE ARTS/LITERACY

	3rd	4th	5th	6th	7th	8th	11th
Mean Scale Score	2409.5	2446.8	2479.8	2501.6	2528.9	2542.9	2575.1
Distance from Standard	-22.5	-26.2	-22.2	-29.4	-23.1	-24.1	-7.9
Change from 2018	+4.5	+0.4	+6	+3.7	+6.1	+3.6	+1.4

Mathematics

Student Group Performance

Mathematics
% Met & Exceeded

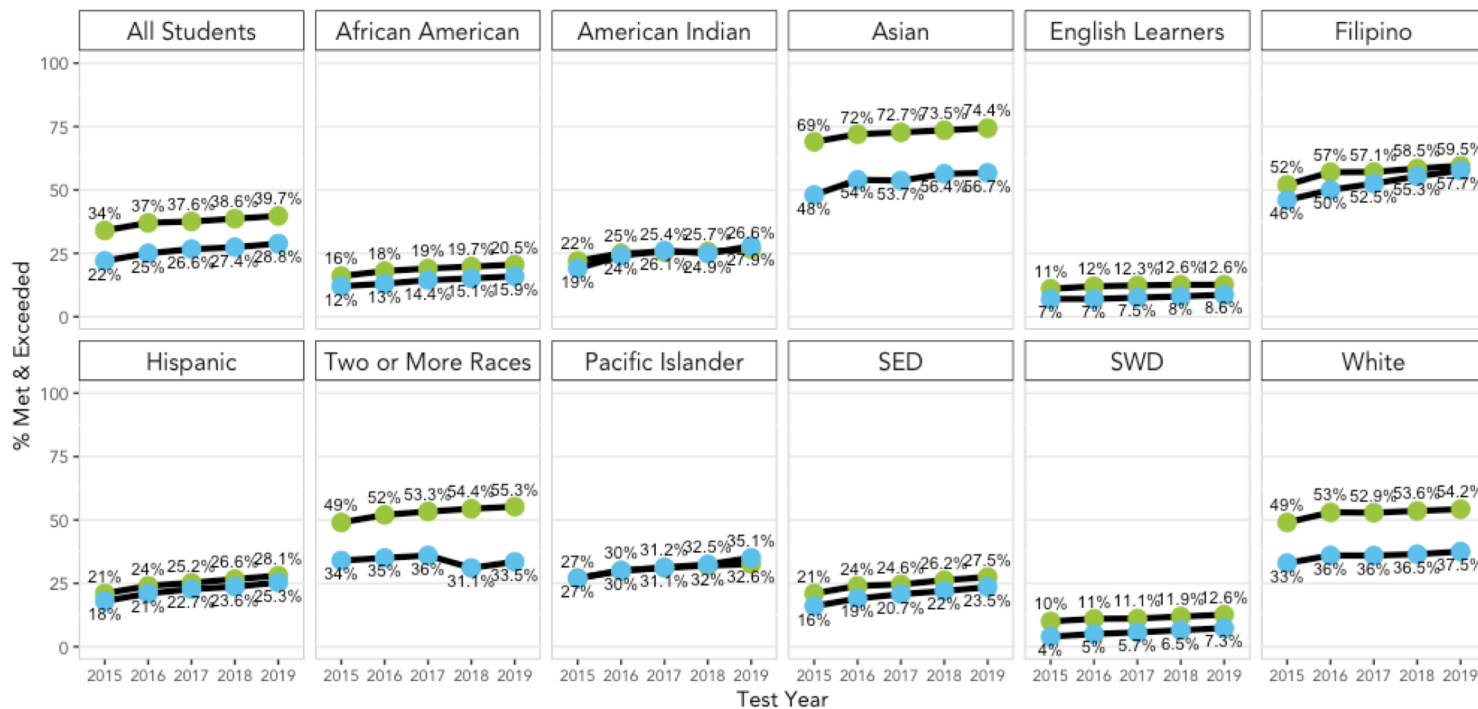


Student Group	% Met & Exceeded
ALL – All Students	28.8%
AA – African American	15.9%
AI – American Indian	27.9%
AS - Asian	56.7%
EL – English Learners	8.6%
EO – English Only	31.5%
FI – Filipino	57.7%
HI - Hispanic	25.3%
HOM – Homeless Youth	19.5%
MR – Two or More Races	33.5%
PI – Pacific Islander	35.1%
SED – Socioeconomically Disadvantaged	23.5%
SWD – Students with Disabilities	7.3%
WH - White	37.5%

Mathematics

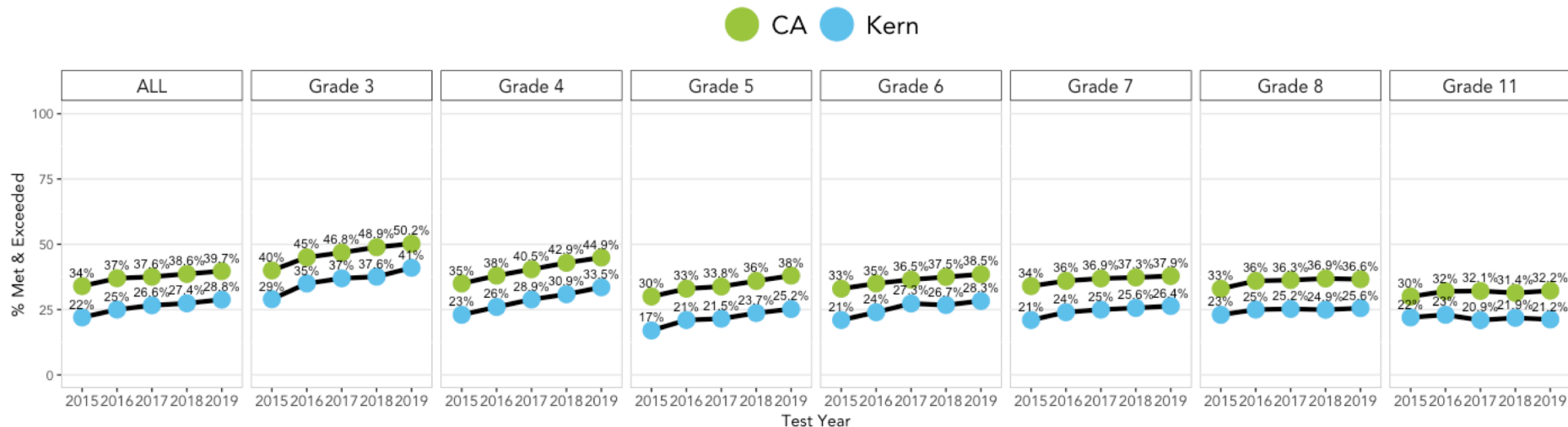
Student Group Performance

CA Kern



Kern County Mathematics

Grade Level Performance



Kern County 2019

Distance from Standard by Grade

MATHEMATICS

	3rd	4th	5th	6th	7th	8th	11th
Mean Scale Score	2415.4	2448.8	2466.4	2487.0	2495.8	2507.7	2526.8
Distance from Standard	-20.4	-36.2	-61.4	-64.9	-71.1	-78.2	-101.2
Change from 2018	+7.7	+5.3	+4.8	+3.1	+3.9	+2.2	-2.6

Parent Education and Student Performance

Kern County

